

POINTS FCC-1 TO FCC-10 ARE 1.5" BRASS DISK SET IN CONCRETE, LOCATIONS DESCRIBED AS FOLLOWS:
 FCC-1: 3.3' OFFSET RIGHT EDGE OF LOOP ROAD, ELY OF MAIN ENTRANCE, NWLY AREA IN PARKING LOT 1-H, IN PLANTER, 13.7' FROM SSMH IN ROADWAY, ONLINE TO ELECTROLEUR.
 FCC-2: 10.6' OFFSET RIGHT EDGE OF LOOP ROAD, 34' BEFORE ENTRANCE TO TENNIS COURT PARKING LOT, 34' SLY OF FLASHING PEDESTRIAN CROSSING LIGHTS IN ASPHALT ROADWAY.
 FCC-3: 15' OFFSET RIGHT EDGE OF LOOP ROAD, BETWEEN CAMPUS SIGN AND SMALL ELECTROLEUR, OPPOSITE CAMPUS CENTER BUILDING, 175' SLY OF OVERHEAD PEDESTRIAN WALKWAY.
 FCC-4: 19.5' OFFSET RIGHT EDGE OF LOOP ROAD, @ ENTRANCE TO PARKING LOT 2, 7' FROM "2-A" PARKING LOT SIGN AND 25.5' FROM END OF 28" RCP OUTLET.
 FCC-5: 5' OFFSET LEFT EDGE OF LOOP ROAD, 14' ELY OF ELECTROLEUR, 35' WLY OF STAIRS TO CAMPUS.
 FCC-6: 3.3' OFFSET LEFT EDGE OF LOOP ROAD, SLY OF OBSERVATORY, 5' ELY OF YELLOW FLASHING LIGHTS.
 FCC-7: 3.5' OFFSET LEFT EDGE OF LOOP ROAD, AT ENTRANCE TO PARKING LOT 5, 8' OFFSET ELECTROLEUR.
 FCC-8: 5.6' OFFSET RIGHT EDGE OF LOOP ROAD, 175' SLY OF EXIT FROM PARKING LOT 6.
 FCC-9: 6' OFFSET LEFT EDGE OF LOOP ROAD, OPPOSITE FLAG POLE @ FIRE STATION, 7.7' FROM 12" RCP.
 FCC-10: 8.3' OFFSET LEFT EDGE OF LOOP ROAD, NEAR BUS STOP, 4.5' OFFSET ELECTROLEUR.

POINT#	NORTHING	EASTING	ELEVATION	DESCRIPTION
1	1957743.70	6089045.93	305.63	FCC-1
2	1958012.03	6089315.03	300.68	FCC-2
3	1958453.91	6089074.08	329.39	FCC-3
4	1958837.23	6088675.81	311.19	FCC-4
5	1958762.25	6088086.74	322.43	FCC-5
6	1958862.64	6087648.25	351.02	FCC-6
7	1957733.85	6087495.58	364.93	FCC-7
8	1957221.62	6087890.05	357.56	FCC-8
9	1957344.40	6088207.38	338.19	FCC-9
10	1957518.01	6088841.92	309.62	FCC-10

NOTES:
 1) THE SCALE FACTOR IS BETWEEN GROUND TO GRID IS 0.99994043791.
 2) THE VERTICAL DATUM USED FOR THIS MAP IS A FOUND ANY OF LOS ALTOS HILLS BENCH MARK SET ON TOP OF A CONCRETE HEADWALL, LOCATED ON THE WESTERLY SIDE OF ELANA ROAD AS SHOWN ON THIS MAP. ELEV. = 328.17'.
 3) TOPO SHOWN ON THIS MAP IS FROM 10/15/2008 AERIAL AND DOES NOT SHOW CURRENT CONDITIONS. THE TOPO WAS USED TO SHOW GENERAL LOCATION OF CONTROL POINTS SET IN RELATIONSHIP TO IMPROVEMENTS.
 4) DISTANCES SHOWN ALONG BOUNDARY LINE ARE GROUND DISTANCES.
 5) FCC-# = FOOTHILL COLLEGE CONTROL NUMBER.

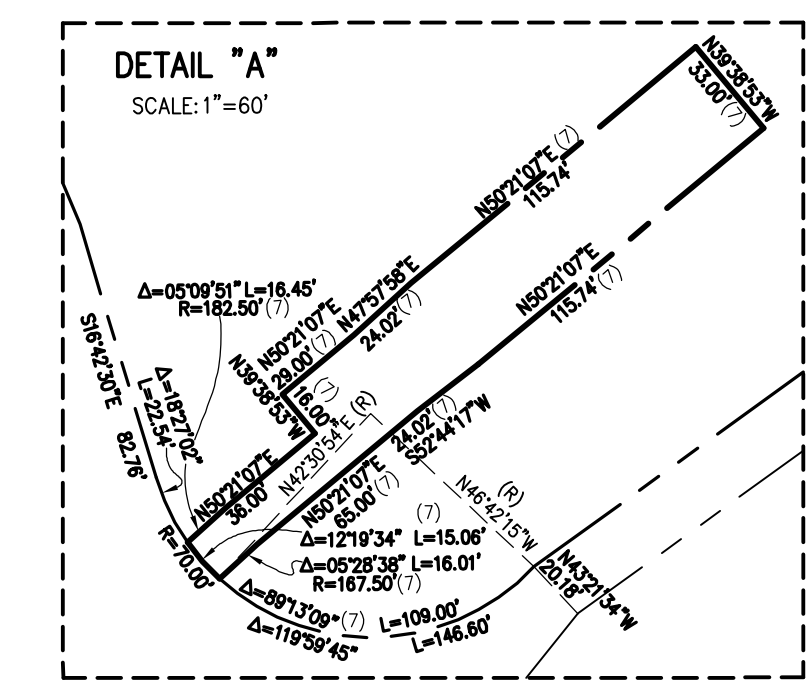
TITLE REPORT:
 NORTH AMERICAN TITLE COMPANY PRELIMINARY REPORT NO. 56901-51990169-PRT, UPDATED AUGUST 18, 2006

RECORD DATA:
 1) BOOK 101 MAPS PAGE 29
 2) BOOK 203 MAPS PAGE 50
 3) BOOK 4498 OFFICIAL RECORDS PAGE 682
 4) BOOK 6805 OFFICIAL RECORDS PAGE 581
 5) BOOK 6805 OFFICIAL RECORDS PAGE 577
 6) BOOK 367 MAPS PAGE 41-42
 7) BOOK 0589 OFFICIAL RECORDS PAGE 480
 8) BOOK 7129 OFFICIAL RECORDS PAGE 92
 9) CALTRANS RIGHT OF WAY RECORD MAP (R-155.4)

UNLOCATABLE EASEMENTS:
 1) EASEMENT TO F.G. SANBORN FOR WATER FLOW, DITCH AND RESERVOIR RECORDED JUNE 17, 1990 PER BOOK 126 DEEDS PG 526
 2) PERPETUAL RIGHT TO USE IRRIGATION DITCH TO L.A. MORRIS, RECORDED JUNE 2, 1917 PER BOOK 457 DEEDS PG 435

BASIS OF BEARINGS:
 CALIFORNIA COORDINATE SYSTEM ZONE III (SHOWS DISTANCES ARE GROUND)

NOTES AND LEGEND:
 ALL DISTANCES AND DIMENSIONS ARE IN FEET (GROUND COORDINATES) AND DECIMALS THEREOF.



PROJECT BOUNDARY LINE
 CENTERLINE
 RIGHT-OF-WAY LINE INSIDE PROJECT BOUNDARY
 OTHER RIGHT-OF-WAY OR PROPERTY LINE
 EASEMENT LINE
 TITLE REPORT PARCEL LINE
 DIMENSION LINE
 DENOTES NON-ACCESS PER RECORD

● FCC-3 FOOTHILL COLLEGE CONTROL MONUMENT WITH NUMBER